

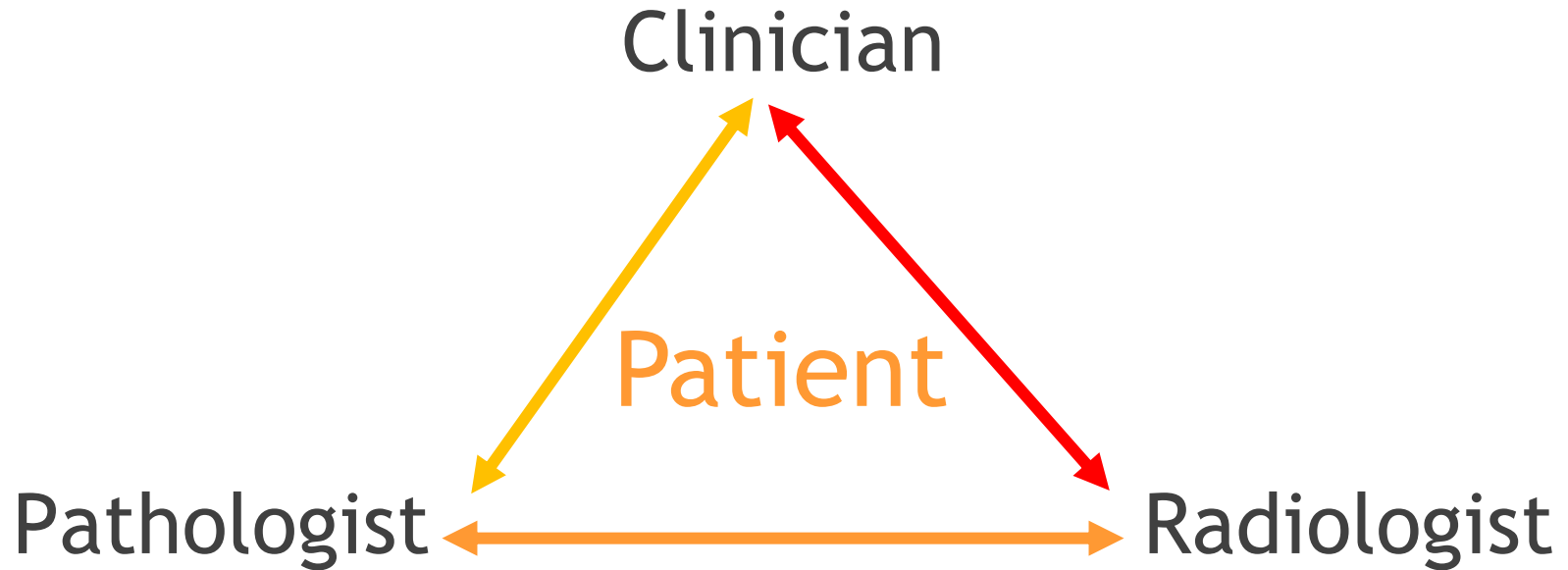
# Role of bronchoalveolar lavage (BAL) in the diagnostic work-up of patients with interstitial lung disease (ILD)



## Diagnostic work-up

prof. Marjolein Drent, pulmonologist, MD, PhD

# Dynamic integrated approach to diagnosis interstitial lung diseases



# Possible causes of diffuse ILD

**Infection**

*Pneumocystis carinii*

**Inhalation**

metals, silicosis, asbestosis, antigens, gasses

**Immunologic**

sarcoidosis, SLE, RA, M. Sjögren, scleroderma, Wegener's granulomatosis

**Iatrogenic**

drug-induced, radiation, oxygen

**Idiopathic**

IPF or UIP, AIP, BOOP, Crohn's disease, colitis ulcerosa, primary billiary cirrhosis

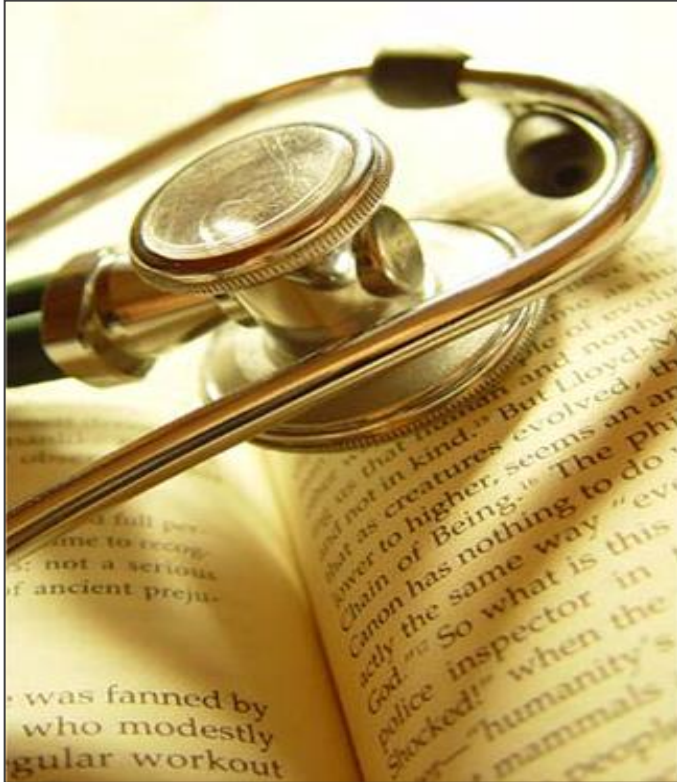
**Inherited**

alveolar microlithiasis, neurofibromatosis, tuberous sclerosis, metabolic diseases

**Inexorable**

lymphangitis carcinomatosa, alveolar proteinosis, eosinophilic pneumonia, vascular disorders, lymphangiomyomatosis (LAM)

# Importance of the correct diagnosis



- significant for the prognosis
- what does the patient have in store?
- trying to avoid possible triggers
- prevention management
- timely start optimal treatment



# Diagnostic work-up

history of the patient, exposures

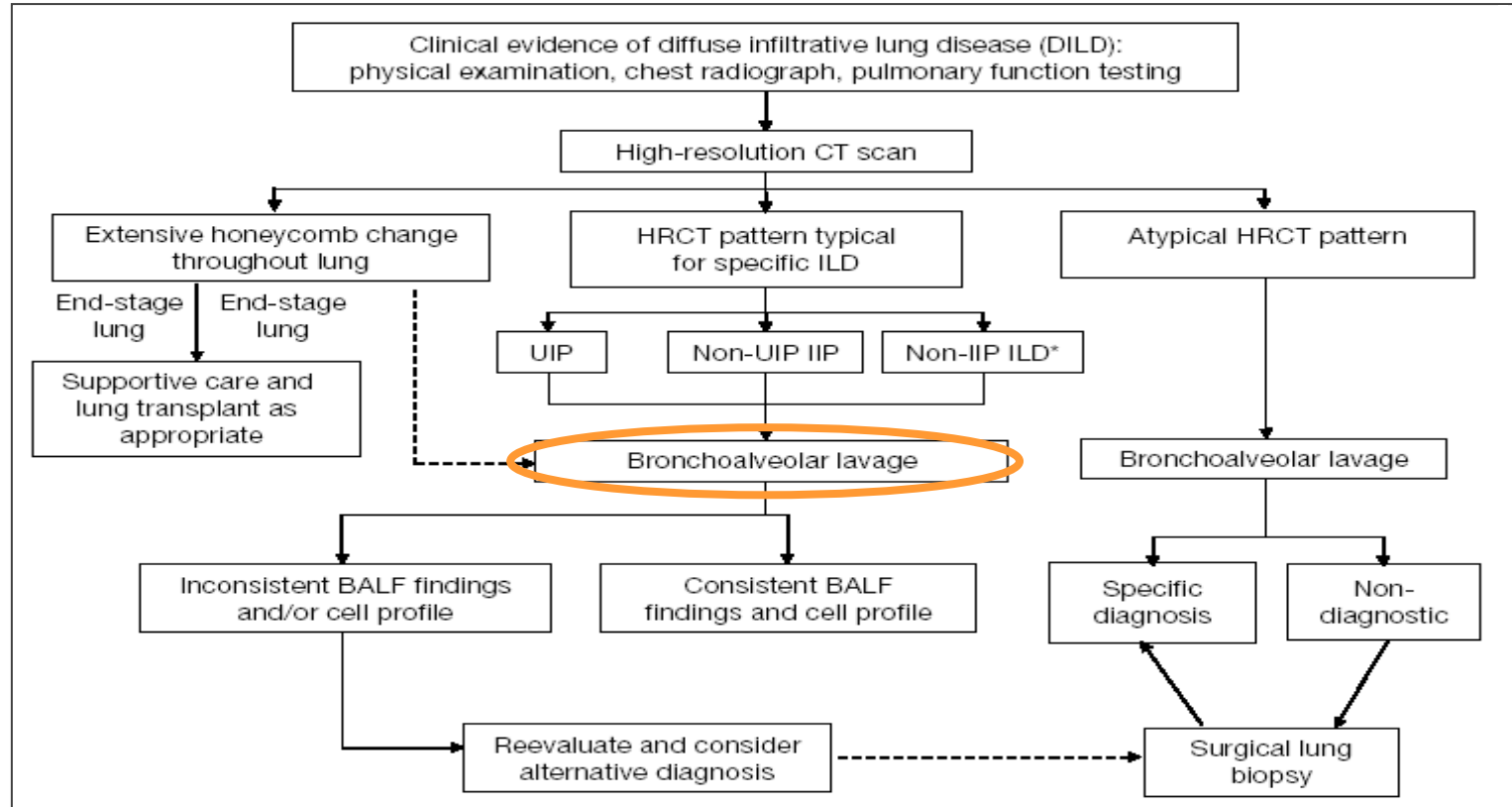
physical examination

supportive procedures:

- lung function, laboratory tests
- imaging procedures: CXR, HRCT
- bronchoscopy + BAL

biopsy: histology

# Evaluation of a patient with ILD





BAL may be useful to exclude:

- infections
- tumors
- ILDs for which it is considered

Diagnostic, such as:

- alveolar proteinosis
- Langerhans cell histiocytosis
- eosinophilic pneumonia

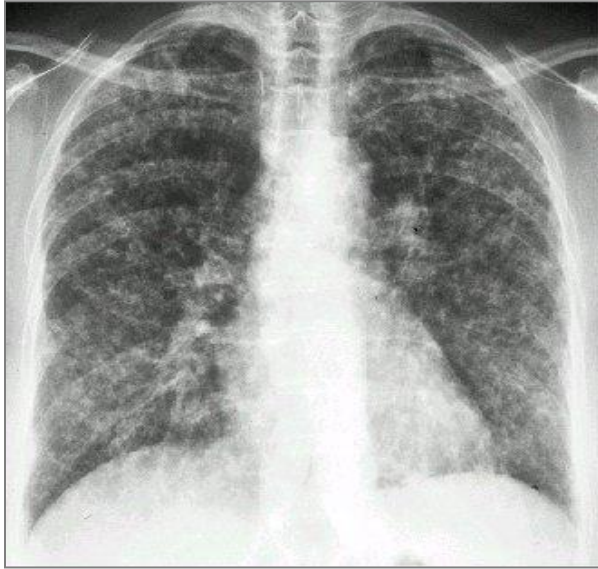


# History usefulness BAL in Respiratory Medicine

- therapeutically by washing a portion of the lung to remove secretions
- research study immunology of the lungs
- clinically: ILD and infectious disorders



# Diagnostic work-up



Patient presenting with disability, *i.e.* dyspnea, exercise limitation and respiratory functional impairment with diffuse interstitial damage on the chest X-ray and HRCT

*Might a BAL be helpful in the diagnostic work-up?*

# PhD theses dealing with BAL

